



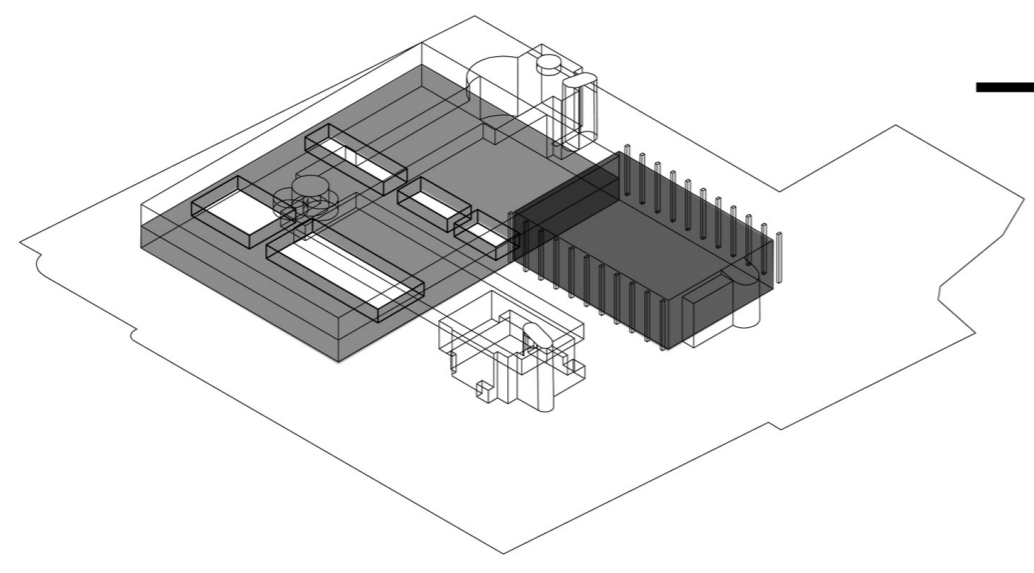
# SPACE TO CULTURE

The project consists in a multi-purpose building open to public and private use, which responds the required double target of the Property: one is cultural, here clearly evident (stimulating, teaching, refining and proposing art); the other one, the recreational theme, is here reinvented and modulated according to a particular axiom: educate - produce art / public - private partnerships.

The functions here suggested were included in an ascending distribution criterion, in the large Cervellati's complex: the project meets the required goal, certain to attract the attention of foreigner Foundations related to contemporary art, or specialist schools; or enlightened individuals; or established artists looking for a room/a studio, for skilled assistants; and a curious community, according to the catchment area, that comes to live a (still) unusual cultural dimension. We clearly got inspired by Brazilian SESC and especially the one in Pompeia, Lina Bo Bardi's masterpiece.

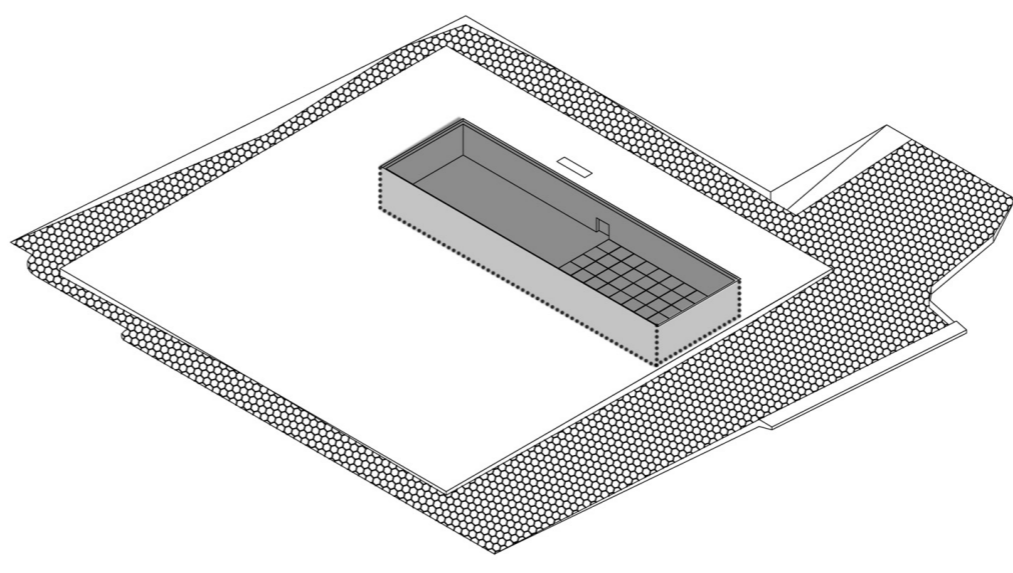
### cleaning step

delete ground floor volume  
removal roof technical systems



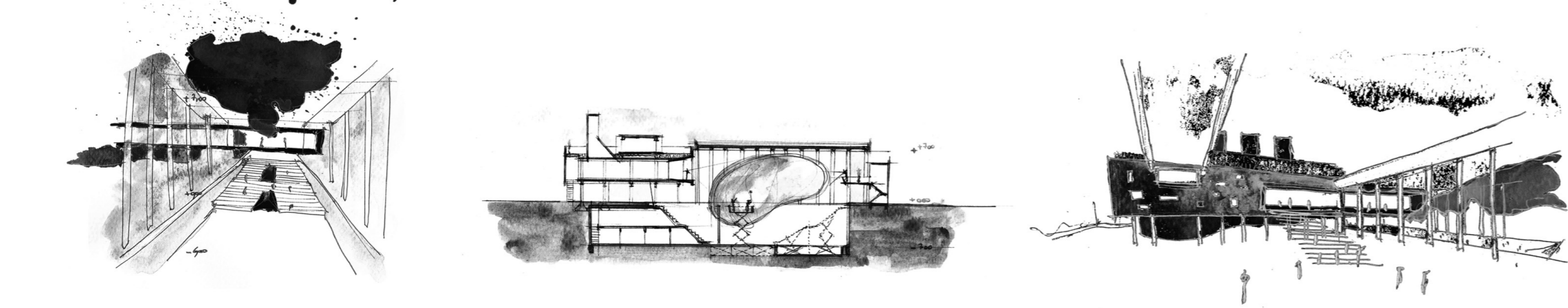
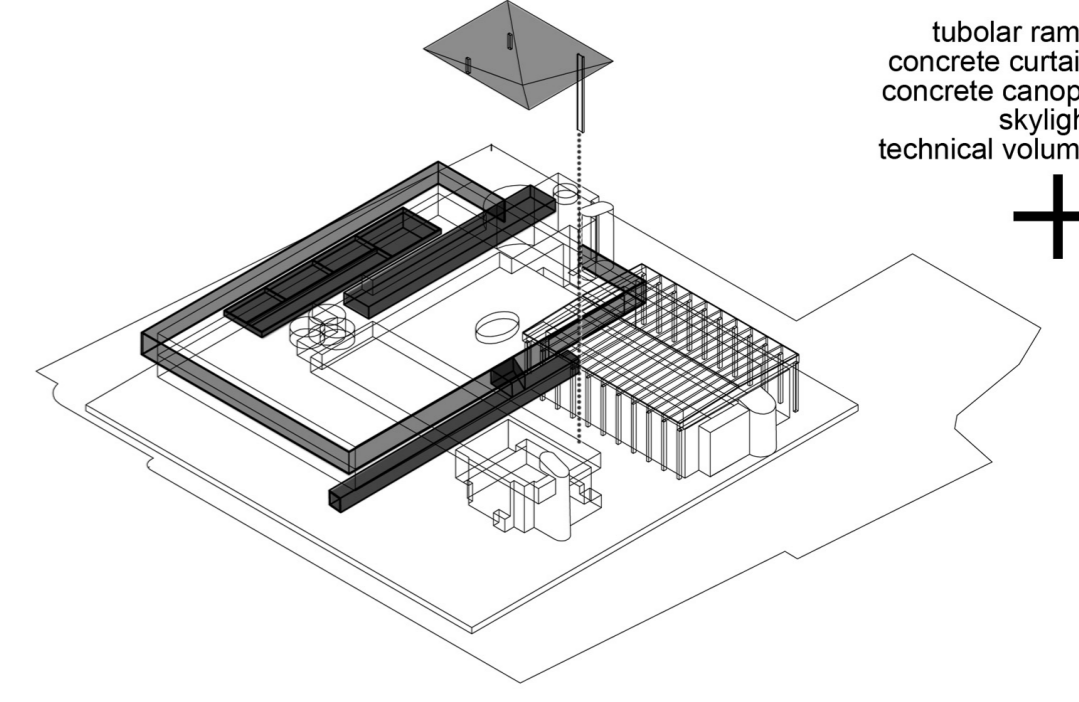
### cutting step

hole to art forge  
shaping the ground in a perimeter ditch



### addition step

tubular ramp  
concrete canopy  
skylight  
technical volume



# GENESIS

It is a work of incision: removing and refurbishing rather than modeling. It is a conversion of a building respecting the architectural historical memory, fundamentally changing the space without compromising the nature of the place, revitalizing existing uses, reusing vertical connections, restarting a new highly skilled productive chain, that now is cultural-bound and open to the community.

We are sure that the former employee, still attached to the memory of the factory, would appreciate it. A conceptual and geographical border building; a new Forte Bastiani, an outpost on Tartar territory. The proposed project could not take into account the significant proximity ( the same city and the same catchment area ) of the recent MAST, slightly differentiating and characterizing the vocation of the new construction , turning on more specific topics , allowing less space for "tout court"entertainment and reinforcing the educational and training aspects.

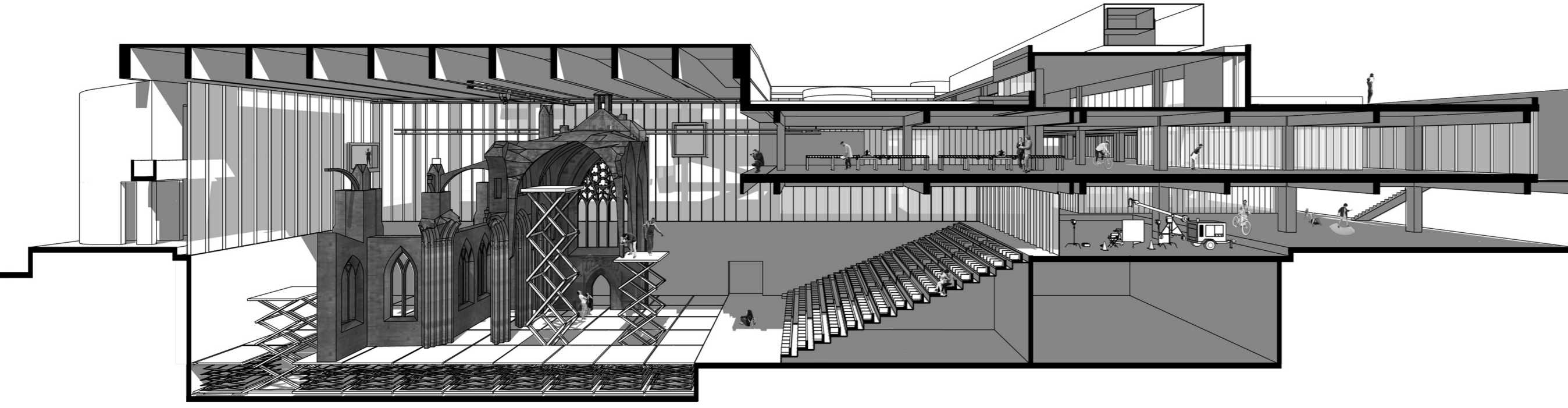
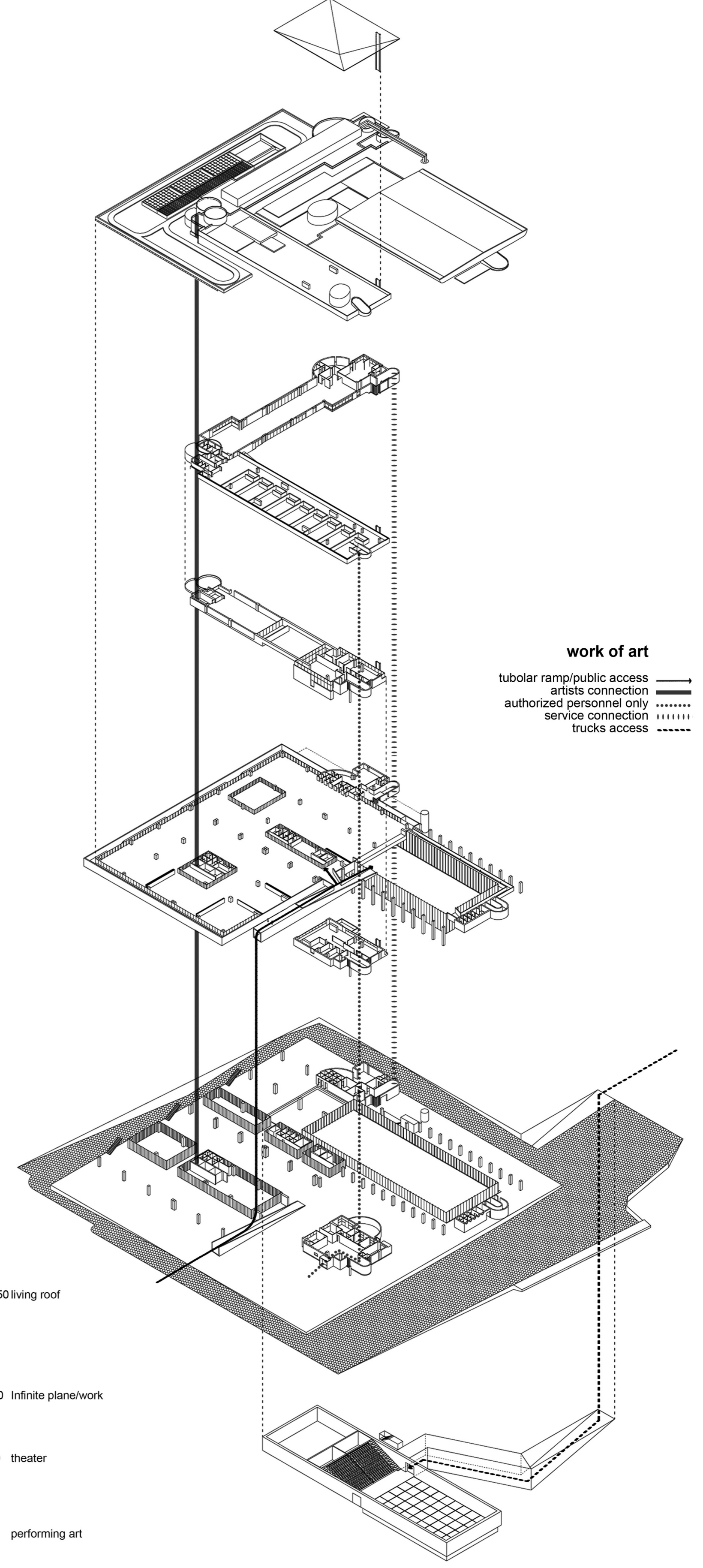
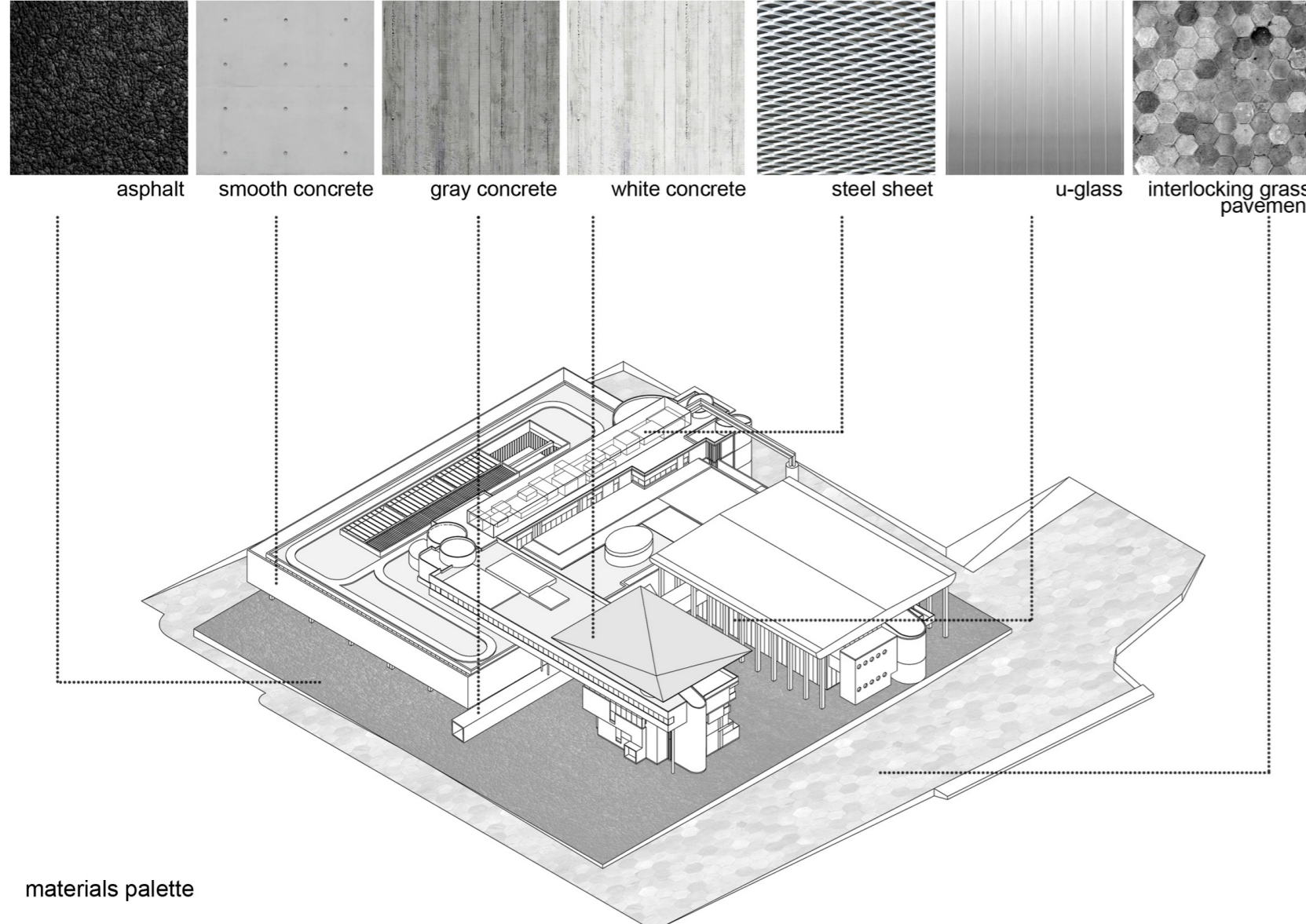


# FORGE PERFORMING ART

There are two main issues that we tried to solve:

First. Redevelop the suburbs, disengaging them from the suffocated Old Town, smothered by City Council and Government Department bureaucracy; a new frontier for young architects who have an infinite "prairie" to conquer, as new Genghis Khans, remodeling our urban and suburban areas, working with surgical and targeted conversion operations, trying new uses, new forms and new materials on the many abandoned buildings. Daring new volumes, new projections, experimenting and contaminating on solid and naked structural frames, re-installing high-tech components, proposing unusual solutions at our latitudes, emphasizing the character of an happy island, a Treasure Island. Nova Emilia Felix.

Second. Re-start and regenerate professional and artistic training; art means creative form of aesthetic expression, which is based on technical skills, native abilities and behavioral norms, derived from study and experience. These are all aspects that are slowly disappearing in our culture, in these hard times: it's mandatory to invest in high level education, especially in the arts field, especially in a country like ours. This is our vision for a new "Opificio", a contemporary art factory that produces culture, education and richness.



+ 11.50 living roof  
+ 4.20 Infinite plane/work  
- 0.50 theater  
- 7.00 performing art